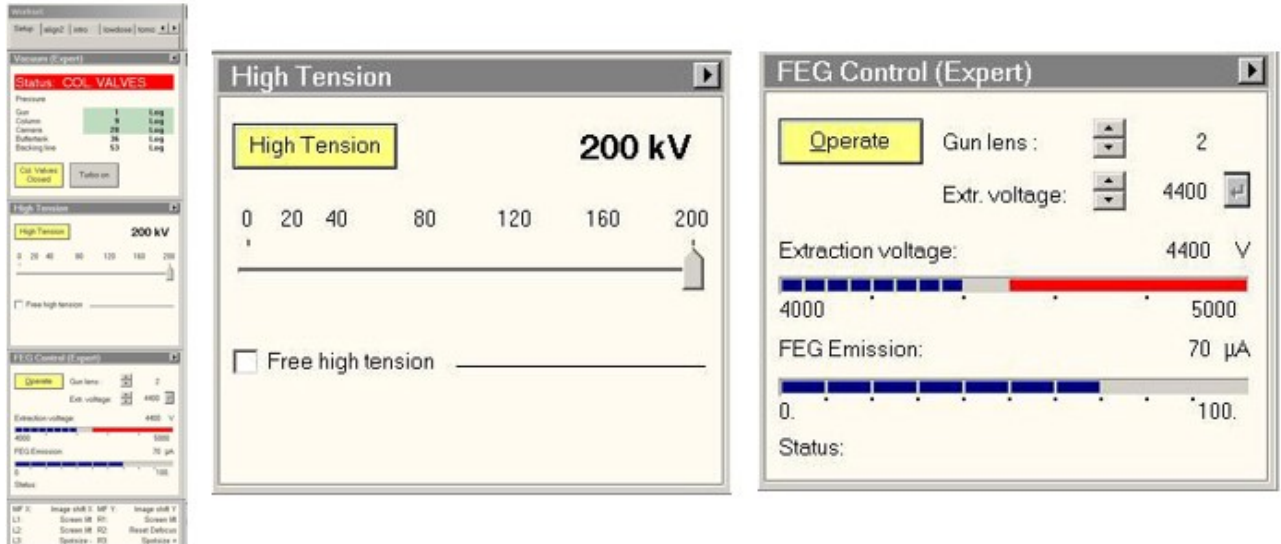


Make sure Microscope is in good shape (ppt associated)

- a. Make sure HT and FEG are on
 - On TEM User Interface (TUI)
 - setup tab > High Tension panel High tension button is highlighted yellow
 - setup tab > FEG Control panel Operate button is highlighted yellow



- b. Make sure column valves are closed and turbo pump is on
 - On TEM User Interface (TUI)
 - setup tab > Vacuum panels Col. Valves closed button is highlighted yellow
 - setup tab > Vacuum panels Turbo Pump button is highlighted yellow

IMAGE

- Setup the microscope for recording the Atlases

- On TEM user interface (**TUI**).

From:
<https://bsi.inscog.eu/> - **BSI wiki**

Permanent link:
https://bsi.inscog.eu/doku.php?id=tf20_screening&rev=1674236112

Last update: **2023/11/01 20:15**

