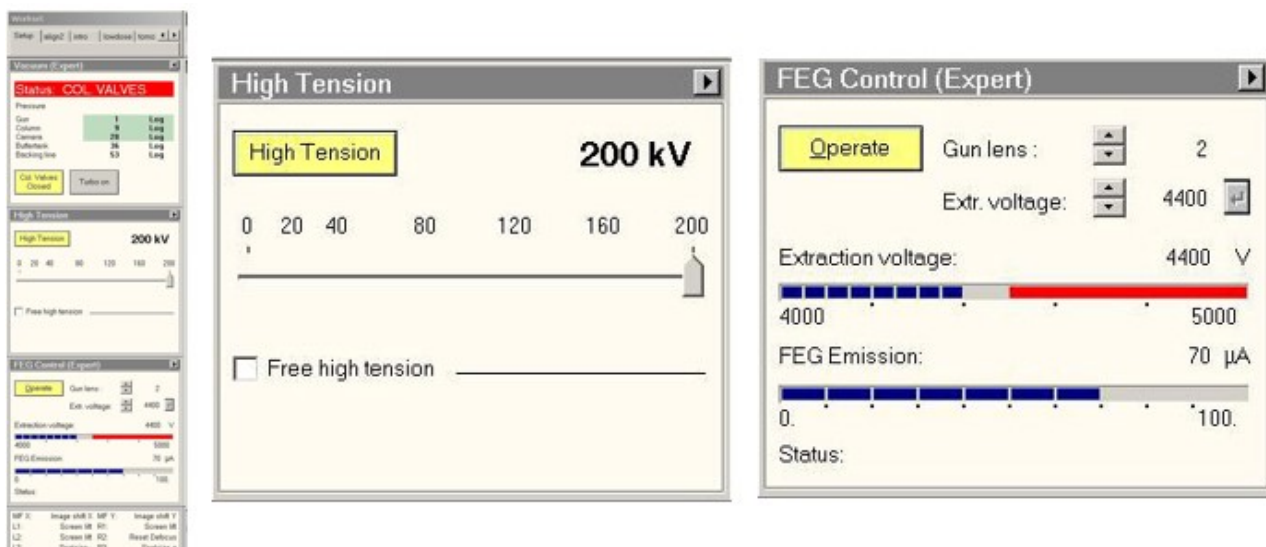


Make sure Microscope is in good shape (ppt associated)

- a. Make sure HT and FEG are on
 - On TEM User Interface (TUI)
 - setup tab > High Tension panel High tension button is highlighted yellow
 - setup tab > FEG Control panel Operate button is highlighted yellow



- b. Make sure column valves are closed
 - On TEM User Interface (TUI)
 - setup tab > Vacuum panel Col. Valves closed button is highlighted yellow

IMAGE

- c. Make sure that EM column vacuum is stable (IGP1 = 6)
 - On TEM User Interface (TUI)
 - setup tab > Vacuum panel Column value indicates 6

IMAGE

- d. Make sure stage is at neutral position
 - On TEM User Interface (TUI)
 - Stage2 tab > control panel press X,Y button to zero out the X, Y to center the stage

IMAGE

- Setup the microscope for recording the Atlases

- On TEM user interface (**TUI**).

From:

<https://bsi.inscog.eu/> - **BSI wiki**

Permanent link:

https://bsi.inscog.eu/doku.php?id=tf20_screening&rev=1680689946

Last update: **2023/11/01 20:14**

